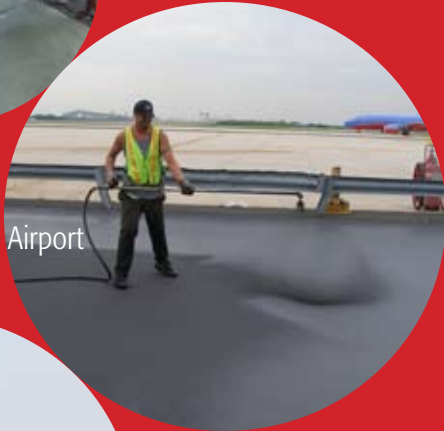


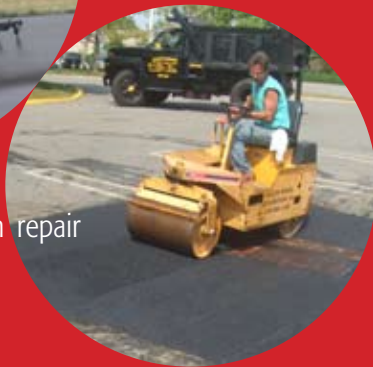
**Concrete Work  
Footings and Walkways  
Belgian Block  
Concrete Curbing  
Manhole Repair**



Philadelphia International Airport



Catch Basin repair



**Paving - Seal Coating  
Line Striping**

- Apartments
- Condominiums
- Town Homes
- Adult Communities
- Shopping Centers / Malls
- Churches
- Office Parks
- Industrial Complexes
- Municipal
- Warehouses



Reflective Glass Beads

Keeping up with fire code not only promotes safety, but also gives your property a well manicured image..



**BUDGET SEALERS INC.**

34A Black Road  
Lawrenceville, NJ 08648

Phone: 609-586-5600  
Fax: 609-586-3253  
E-mail: budgetsealers@aol.com

[www.budgetsealers.com](http://www.budgetsealers.com)

**BUDGET**  
*Paving & Asphalt  
Maintenance*

Budget Sealers is a full service asphalt maintenance company. Since 1998, we have built our business on the expert application of premium products serving New Jersey and the Greater Philadelphia Area...



- Paving**
- Seal Coating**
- Asphalt Patching**
- Hot Tar Crack Sealing**
- Concrete**
- Line Striping**
- Signage**

[www.budgetsealers.com](http://www.budgetsealers.com)

**Restore your asphalt  
to its original look !**

# Let BUDGET take care of your asphalt maintenance needs...



BEFORE

The effects from the sun and water dry out the oils in the top layer of asphalt. You will notice the effects from these factors when you start to see the asphalt turning from black to grey. Ideally, it is wise to seal coat before these effects occur. The sooner you seal coat your asphalt, quite simply, the sooner you will begin to protect your asphalt from the harmful effects of the sun and water.

LACEY TOWNSHIP  
WATER AUTHORITY,  
NEW JERSEY



AFTER



We use a premium 100% COAL-TAR based sealer. This is the "missing link" ingredient that makes the asphalt sealer DURABLE and RESISTANT to fuel and oil. We also add a LATEX BASED fortifier to increase the life and durability of our sealer.

## OUTSIDE YOUR FACILITY...

"Curb Appeal" - Another important, easily addressed area of image and safety on your property outside is the fire zone curbing.



BEFORE

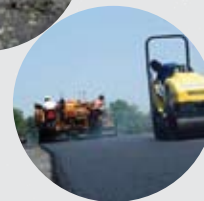
We thoroughly clean and prep curb area. This includes scraping off old paint "flakes". We'll apply weed-killer and trim any vegetation clear from curb. Then apply a thick uniform latex based paint on curbs and over existing fire zone striping.



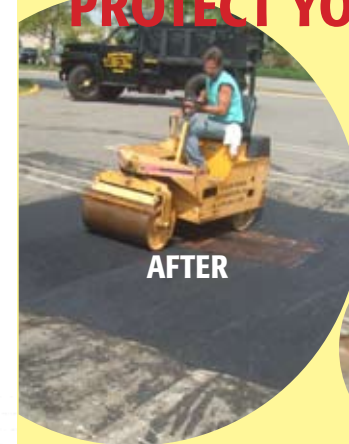
AFTER

## Asphalt Maintenance

- Paving
- Seal Coating
- Crack Sealing
- Asphalt Patching
- Repair Catch Basins
- Pot Hole Repair
- Joint Sealing



## PROTECT YOUR ASPHALT...



AFTER

Improper drainage or damaged areas of your asphalt need to be repaired. We can re-pave these areas for you.



BEFORE

**Crack Sealing and Seal Coating** your asphalt will protect water from deteriorating the base and aggregate. Not only will it extend the life of your asphalt, it will also give your property an image "facelift".



AFTER



BEFORE



AFTER



BEFORE

## Service Beyond the Surface...